

A FOUNDATION FOR THE FUTURE



KUMON

KUMON MATH AND ENGLISH

Overview

Kumon is an individualized program. It develops students' self-learning through the study of Kumon Math and English worksheets. It is a partnership between the parent, student, and Kumon Instructor, to fully pursue each child's potential and develop his or her ability to the maximum. Students progress independently at their own pace. They develop confidence, a daily study habit, and a high level of math and reading ability.



THE KUMON METHOD



The Kumon Method

At Kumon, we believe that the most beneficial thing we can do for children is to furnish them with the ability to advance to high school level material through self-learning, as early as possible in life.

Kumon students study independently from an early age and develop both a high level of academic ability and the ability to learn independently, or what we at Kumon refer to as 'self-learning' ability.

After children who have done Kumon grow up, they can think of solutions by themselves even when faced with difficult challenges. The skills that students gain through doing Kumon help them achieve their goals and dreams.

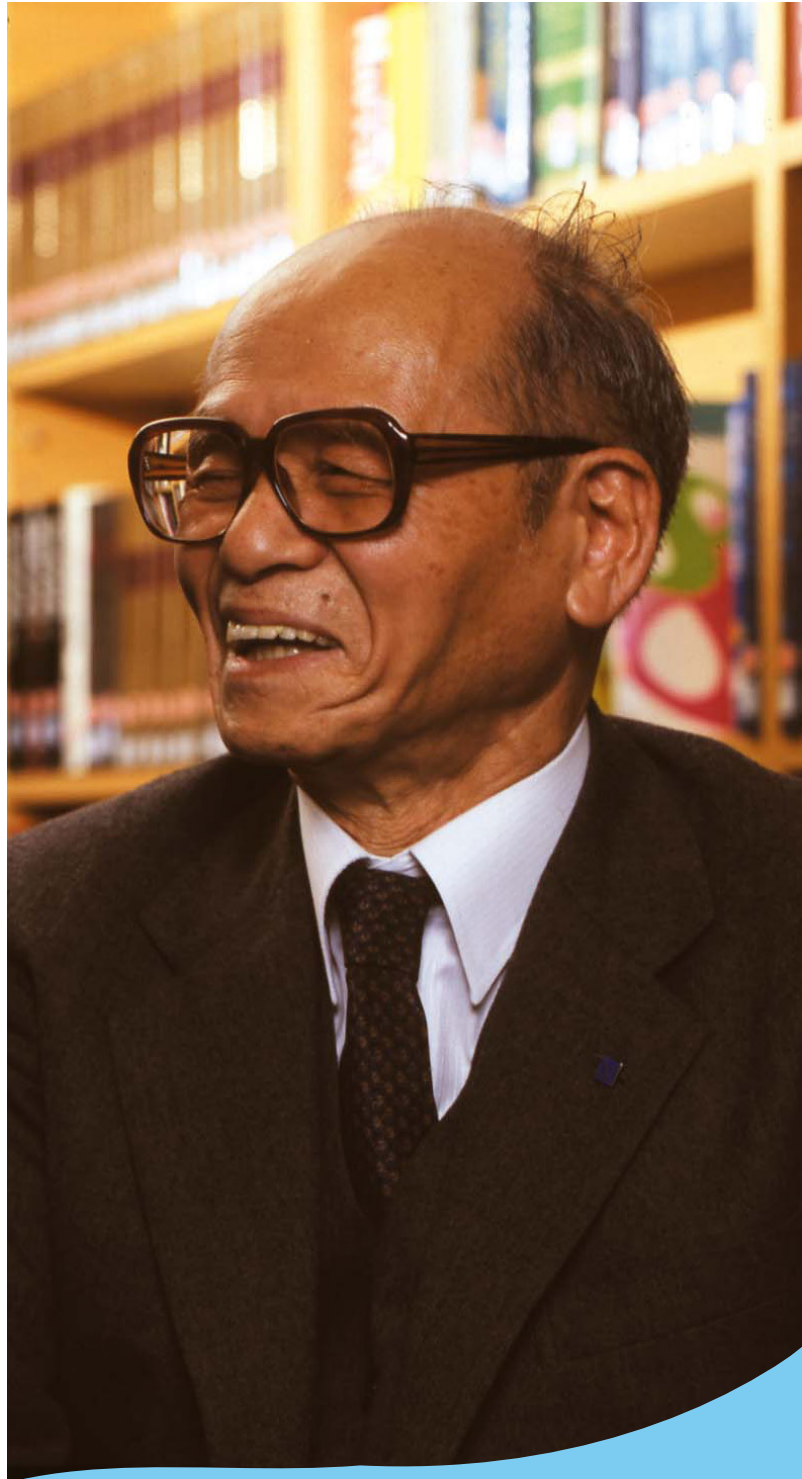
ABOUT KUMON

It all began at home

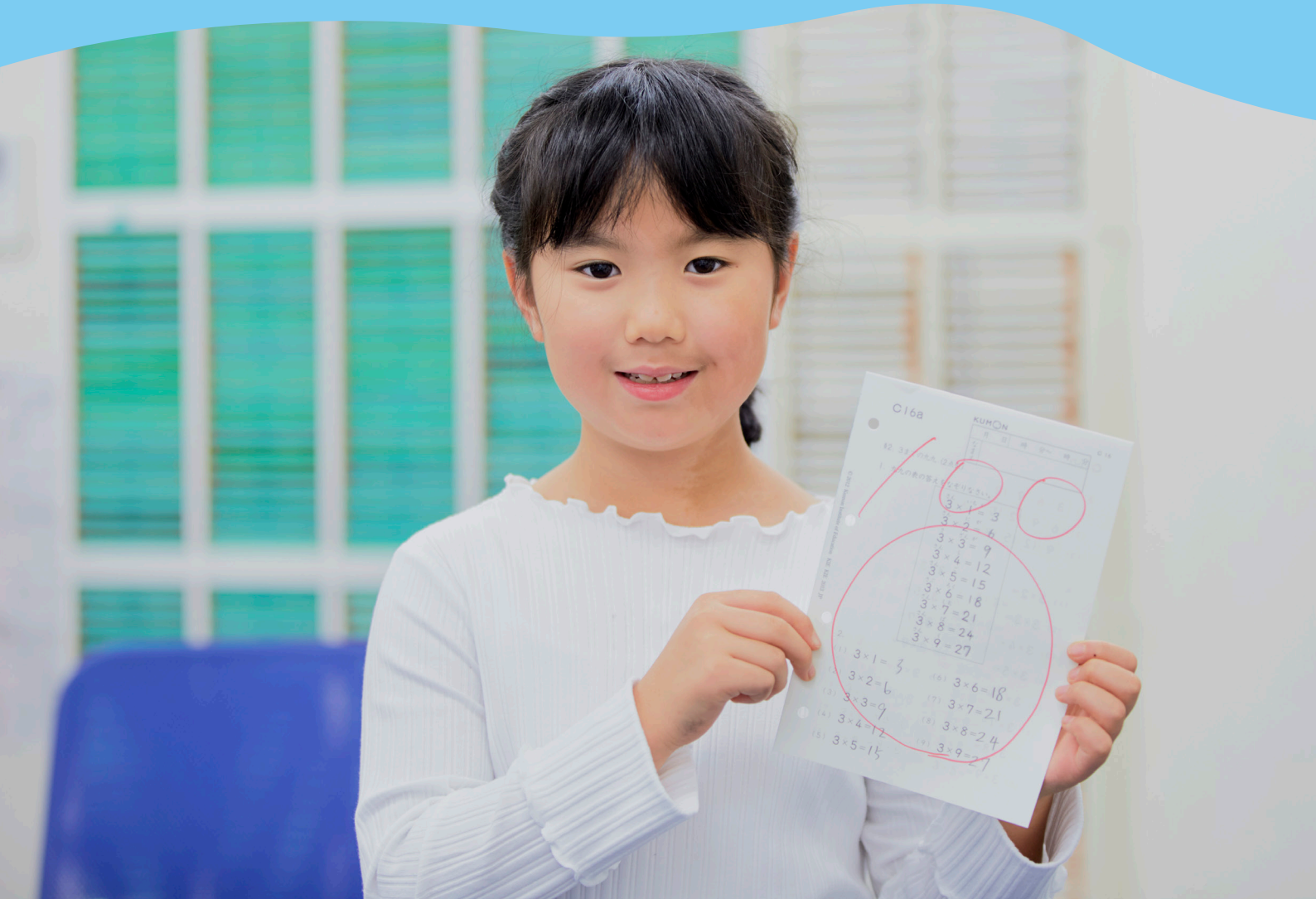
In 1954, Toru Kumon, a high school math teacher, found that his son, who was in Grade 2, did not perform as well as he usually did for his math test. Slow, imprecise calculation skill was the reason. This concerned Toru Kumon as a parent, and as a math teacher. He had taught many high school students who struggled with math for the same reason.

Toru Kumon began to handwrite worksheets so his son could practice calculations by himself for up to half an hour every day. Day after day, Toru Kumon carefully matched the content of the handwritten worksheets to his son's improving ability. Soon, his son progressed beyond school grade level and could solve calculus equations by the end of elementary school.

Encouraged by his son's progress, in 1958, Toru Kumon released his worksheet-based, home study method. Millions of students, in over 60 countries and regions, study Kumon worksheets every day to improve their math and reading ability.



STARTING POINT



Confidence from the start

To develop confidence, your children start with worksheets that are easy for them. So easy, they can complete a high volume of worksheets with a near-perfect score, with speed and concentration. At Kumon, we refer to this as work skills.

Confident they can do the worksheets on their own, your children will be enthusiastic to do more. Their concentration will expand and a daily study habit will form.

DAILY STUDY



Practice and daily study

Your children can practice a topic a number of times when needed. This will help them decrease the number of errors, reduce completion time, review an earlier topic, or consolidate something new before they move on. The right amount of practice and a daily study habit (ideally no more than 30 minutes per subject per day) prepares your children for higher levels and lays the foundation for smooth progress.

INDIVIDUALIZED LEARNING

Every child progresses at their own pace

Your children will always be given the worksheets they are ready to learn next. This is determined by completion time, accuracy, ability to correct mistakes and motivation. Worksheets are matched to current ability. Students who need to build on foundational concepts are supported. Students who can be challenged by more complex work are extended. Your children progress at their own pace, not bound by age and school grade. This is the “just-right” level of learning.



SELF-LEARNING

Studying ahead of school grade develops the skill of self-learning

Equipped with the skill of self-learning, your children can pursue their own potential at school and in life. There is no limit to how far they can advance through self-learning.

How does Kumon develop self-learning? When your children advance ahead of school grade level in the worksheets, they learn for themselves what they are yet to be taught at school. When they encounter something new, they study the example, draw on previous learning and give it a try. They try and try again until they finally get it, sometimes with a hint from the Instructor. This is how Kumon develops self-learning.

Your children come to expect the challenge of something new and gain satisfaction in working it out for themselves. They develop a mindset that no problem is too difficult to attempt.



WORKSHEET-BASED LEARNING

A worksheet-based approach for the digital age

Kumon is a worksheet-based program. Whether using paper and pencil, or a tablet and stylus, your children read, think, write, and correct any errors. In Kumon Math, they learn to write intermediate steps efficiently. In English, they summarize what they read. Able to absorb vast amounts of information and solve complex problems on their own, our students thrive in the digital age.



KUMON CONNECT

KUMON CONNECT offers flexibility without compromising the structured learning process

The world's best Kumon Math and English worksheets can now be studied digitally, on a tablet via the KUMON CONNECT learning platform at selected Kumon Centers.

KUMON CONNECT gives students the option of studying the same Kumon Math and English programs, with a stylus, tablet, and digital worksheets, instead of the traditional pencil and paper.

KUMON CONNECT also digitizes students' study records, allowing parents and children to quickly and easily check details such as score, worksheet completion time, and overall study progress.



PARTNERSHIP



A partnership for progress

Kumon is a partnership between you, your children, and your Kumon Instructor.

Your children study their worksheets every day. You encourage your children to complete their worksheets to the best of their ability.

Your Instructor creates an individualized study plan for your children, assigns and sends home the worksheets they are ready to learn next, and supports your children in developing self-learning ability. They will also provide you with regular progress updates. They are dedicated to drawing out the potential of your children.

This partnership makes Kumon a supportive and flexible process of learning.

EARLY LEARNERS



Early learners love to learn

Kumon worksheets are also designed for early learners. Kumon Math begins with number recognition, counting, and number writing. English begins with word recognition, letter sounds and letter writing. There are also worksheets that develop the ability to use a pencil.

Early learners love to learn. Kumon worksheets provide parents with a simple, systematic approach.

TESTIMONIALS



Nagita Dian Syahla EFL Student

Kumon Keeps Me Motivated to Learn

I love learning at Kumon because the Instructor is always friendly and patient. Even with my busy schedule, Kumon helps me maintain consistent study habits. During my breaks, I usually take a nap or play with my favorite cat—simple routines that keep me motivated, focused, and excited to continue my Kumon learning journey.



I Wayan Resa Dinata Completer Kumon (EFL)

Studying at Kumon has given me many benefits.

Becoming a Kumon Completer is just as important as graduating from school. It is a personal achievement that proves I can complete all the Kumon levels and reach the finish line as a Completer.



Samuel Ivander Oesman Double Subject Student

Math and EFL

Since joining Kumon, I've become more disciplined and independent. I've learned to take responsibility for my own work. When I encounter difficult questions, I try to solve them on my own several times before asking for help.

KUMON MATH

Foundation for high school math

Kumon Math develops quick, precise calculation skills necessary for the study of high school math. It is a comprehensive program, including topics such as number recognition, counting, and writing; the four basic operations of addition, subtraction, multiplication, and division; fractions and decimals; and algebra, equations, functions and calculus.

Each worksheet builds on what has come before and prepares your children for what comes next. Your children progress step by step toward the goal of advanced high school math.



MATH PROGRAM



ENGLISH AS A FOREIGN LANGUAGE

Develop English reading comprehension ability

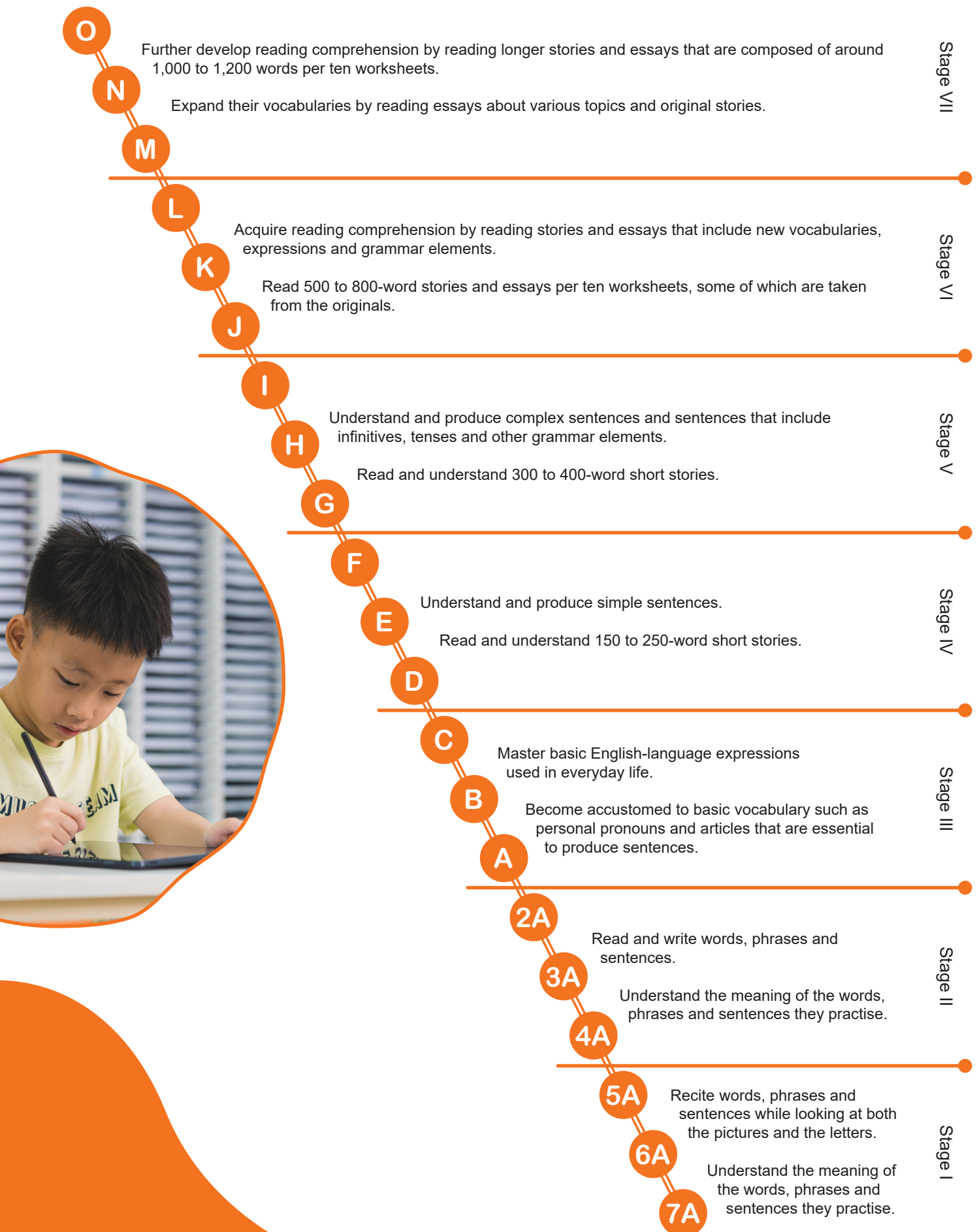
The goal of the English as a Foreign Language Program (EFL) is to develop an advanced level of English reading comprehension ability. The program has been designed for non-native English speakers and structured in a manner to cultivate enjoyment in reading English materials. As students advance, they acquire the skills for self-learning while developing strong reading comprehension ability within the English language.

Features of the EFL Program

In order for students to read on their own, the program has been structured so that students can refer to the CD textbook while listening to the English voices on the audio files. Native language translations are provided in the CD textbooks for new English words. In the worksheets, explanatory notes and paraphrases to simple expressions are also provided.



EFL PROGRAM



BAHASA INDONESIA

Improve their reading skills to an advanced level

Students with advanced reading skills possess the ability to comprehend reading material, analyze content critically, read books from different genres, and maintain a good reading pace. Children with advanced reading skills can enhance their knowledge by learning from books.

Benefits of enrolling in the Indonesian Language Program

The Indonesian language program has several features: children learn to read and write in a fun way, improve reading speed and accuracy, increase reading interest in books, and improve children's advanced reading comprehension skills. When children develop strong reading comprehension skills, they will enjoy reading books and comprehend their contents, regardless of the book's genre. They will be able to grasp the intended message of the writer or speaker, communicate their own ideas effectively, and write sentences with proper structure.



BAHASA INDONESIA PROGRAM



WEEKLY STUDY ROUTINE



PRESENT HOMEWORK & CONFIRM CLASSWORK

At the start of class, your children will present their completed homework to the Instructor. The Instructor will then allocate worksheets for study during class, always at a level that is just right for each child.



STUDY DURING CLASS

Your children will complete assigned worksheets during class. The duration of study depends on the worksheets assigned for the day. During the initial stages of your children's Kumon program, they will typically take around 30 minutes to complete each subject.



PRESENT COMPLETED CLASSWORK

Your children either present their completed worksheets for marking or mark their own worksheets if they are able.



CORRECTIONS

Your children correct their mistakes if there are any. The Instructor will then check the corrections.



RECORD RESULTS

The completion times and initial scores for each worksheet will be recorded. Should your children study more than one subject, steps one to five are applied to the second subject.



HOMEWORK IS ASSIGNED

After reviewing your children's classwork, worksheets are assigned as homework for non-class days. Keeping your children's classwork in mind, your Instructor will assign work at a level just right for study at home. This is to maximize your children's learning and help them develop good study habits.



COMPLETE HOMEWORK

Your children should complete the assigned homework in an environment where they can concentrate fully.



PRESENT HOMEWORK AT THE NEXT CLASS

All marked and corrected homework should be presented at the next class, regardless of whether your children attend in-Center or virtual classes.

STUDY FLOW



INFORMATION

Fees Structure

	Area 1	Area 2	Area 3	Area 4	Area 5
Registration Fee	Rp350.000,00	Rp350.000,00	Rp350.000,00	Rp350.000,00	Rp300.000,00
Monthly Fees Preschool - Primary	Rp525.000,00	Rp490.000,00	Rp480.000,00	Rp440.000,00	Rp430.000,00
Monthly Fees Secondary - High School	Rp575.000,00	Rp540.000,00	Rp530.000,00	Rp490.000,00	Rp480.000,00
Areas	Jabodetabek & Karawang	Serang, Cilegon, Rengasdengklok dan Cikampek	Bali, Jawa Barat, Kalimantan Barat, Kalimantan Selatan, Kalimantan Tengah, Kalimantan Timur, Kep.Bangka Belitung, Kep.Riau, Sulawesi Selatan, Sulawesi Utara, Sumatera Selatan, Sumatera Utara, Surabaya Raya (Gresik, Sidoarjo, Surabaya)	Jawa Timur selain Surabaya Raya & Riau	Aceh, Di Yogyakarta, Jambi, Jawa Tengah, Lampung, Nusa Tenggara Barat, Sumatra Barat, Bengkulu

How to enroll

Please contact your local Kumon Center for details and to make enrollment arrangements.

Further information

INDONESIA



id.kumonglobal.com

KUMON'S MISSION

By discovering the potential of each individual and developing his or her ability to the maximum, we aim to foster sound, capable people and thus contribute to the global community.



[instagram.com/kumonindonesia](https://www.instagram.com/kumonindonesia)



[facebook.com/kumonindonesia.official](https://www.facebook.com/kumonindonesia.official)



[youtube.com/@kumonindonesia](https://www.youtube.com/@kumonindonesia)

